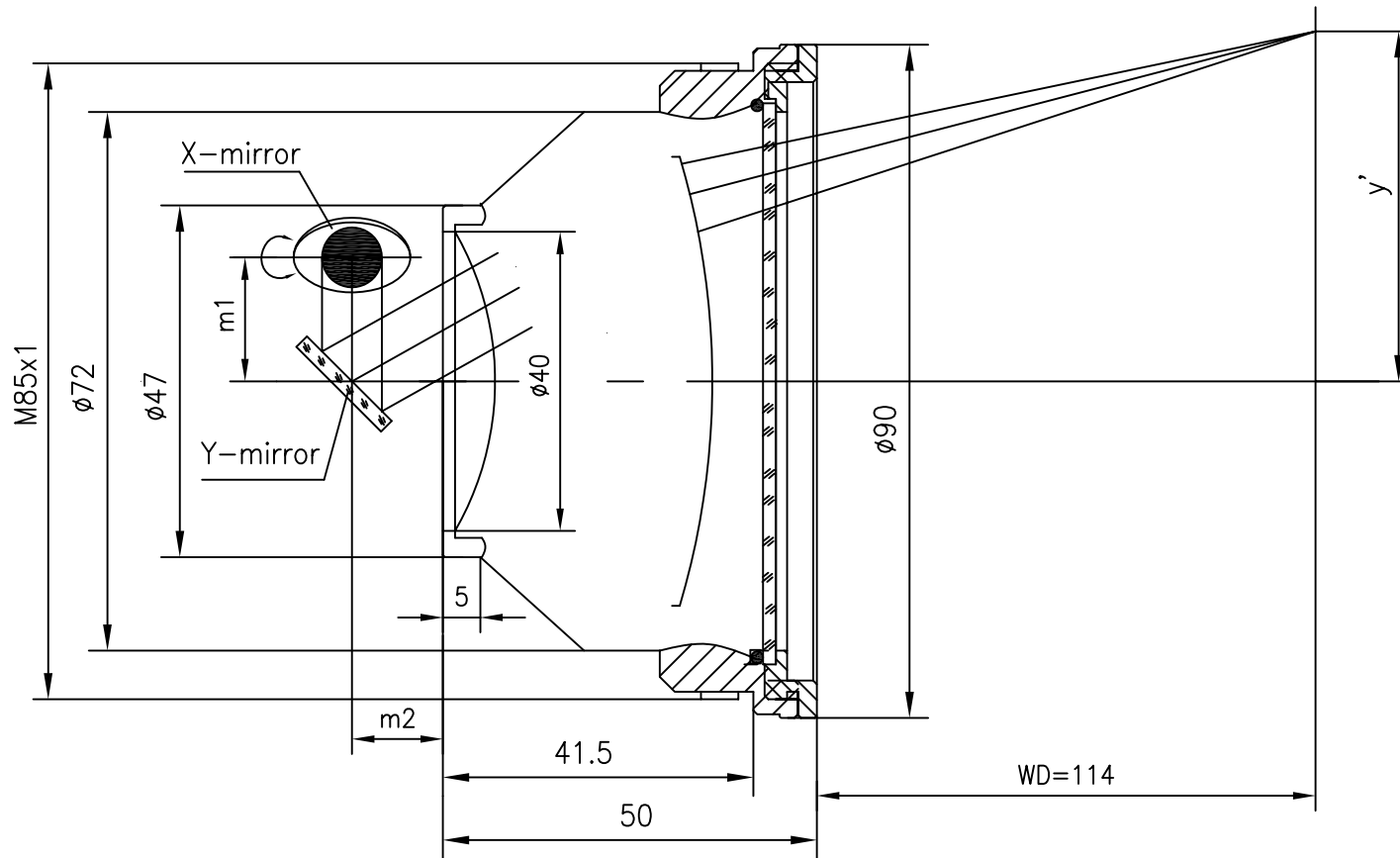


# F-Theta f=100mm

## Drawing No. SH-532-70-100-12



### Specification

EFL	100mm
WD	114mm
Wavelength	$\lambda = 532\text{nm}$
scan angle	$\pm 28^\circ$
max scan field	70mm x 70mm
Entrance beam diameter $\phi$	12mm
Center point diameter ( $1/e^2$ )	10 $\mu\text{m}$
Edge point diameter ( $1/e^2$ )	11 $\mu\text{m}$
mirror distance $m_1$	16-18
mirror distance $m_2$	10-12
Transmission >	97%
Thread	M85x1
With protective window	yes