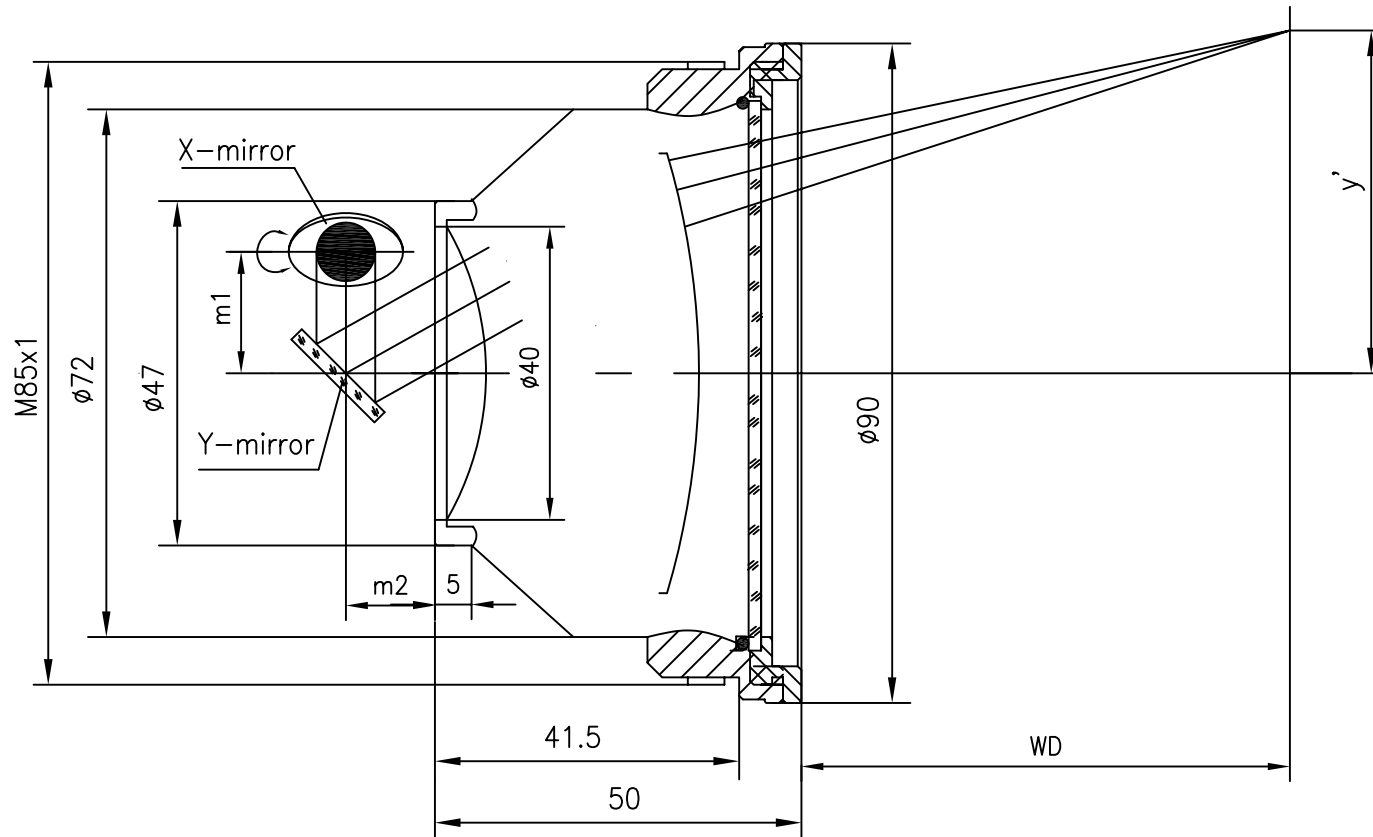


F-Theta f=500mm

Drawing No. SH-532-350-500-12



Specification

EFL	500mm
WD	539mm
Wavelength	$\lambda = 532\text{nm}$
scan angle	$\pm 28^\circ$
max scan field	350mm x 350mm
Entrance beam diameter \varnothing	12mm
Center point diameter ($1/e^2$)	41 μm
Edge point diameter ($1/e^2$)	43 μm
mirror distance m1	16-20
mirror distance m2	10-12
Transmission >	97%
Thread	M85x1
With protective window	yes