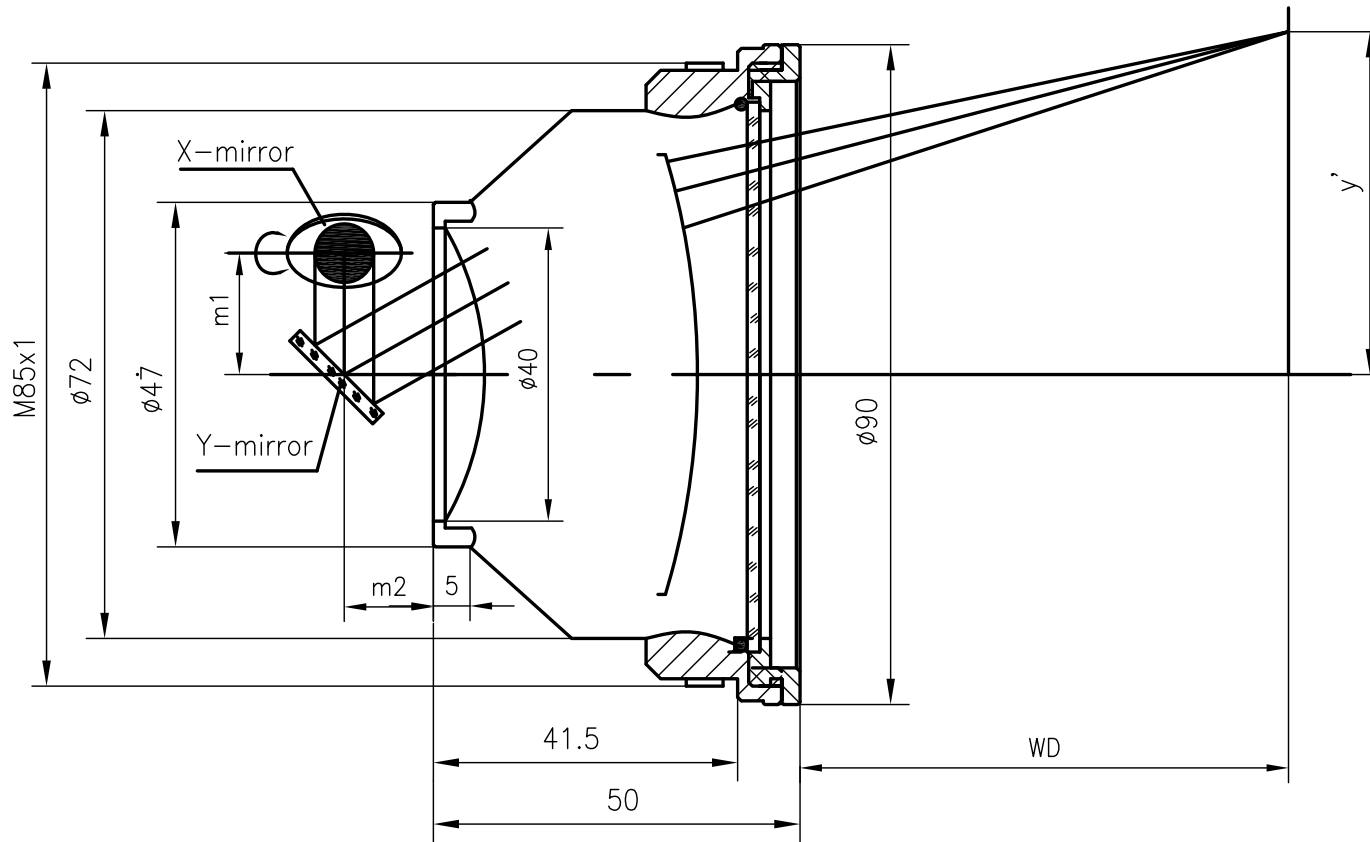


F-Theta f=750mm

Drawing No. SH-355-550-750-8



Specification

EFL	750mm
WD	833mm
Wavelength	$\lambda = 355\text{nm}$
scan angle	$\pm 28^\circ$
max scan field	550mm x 550mm
Entrance beam diameter \varnothing	8mm
Center point diameter ($1/e^2$)	74 μm
Edge point diameter ($1/e^2$)	75 μm
mirror distance m1	12-16
mirror distance m2	12-16
Transmission >	97%
Thread	M85x1
With protective window	yes