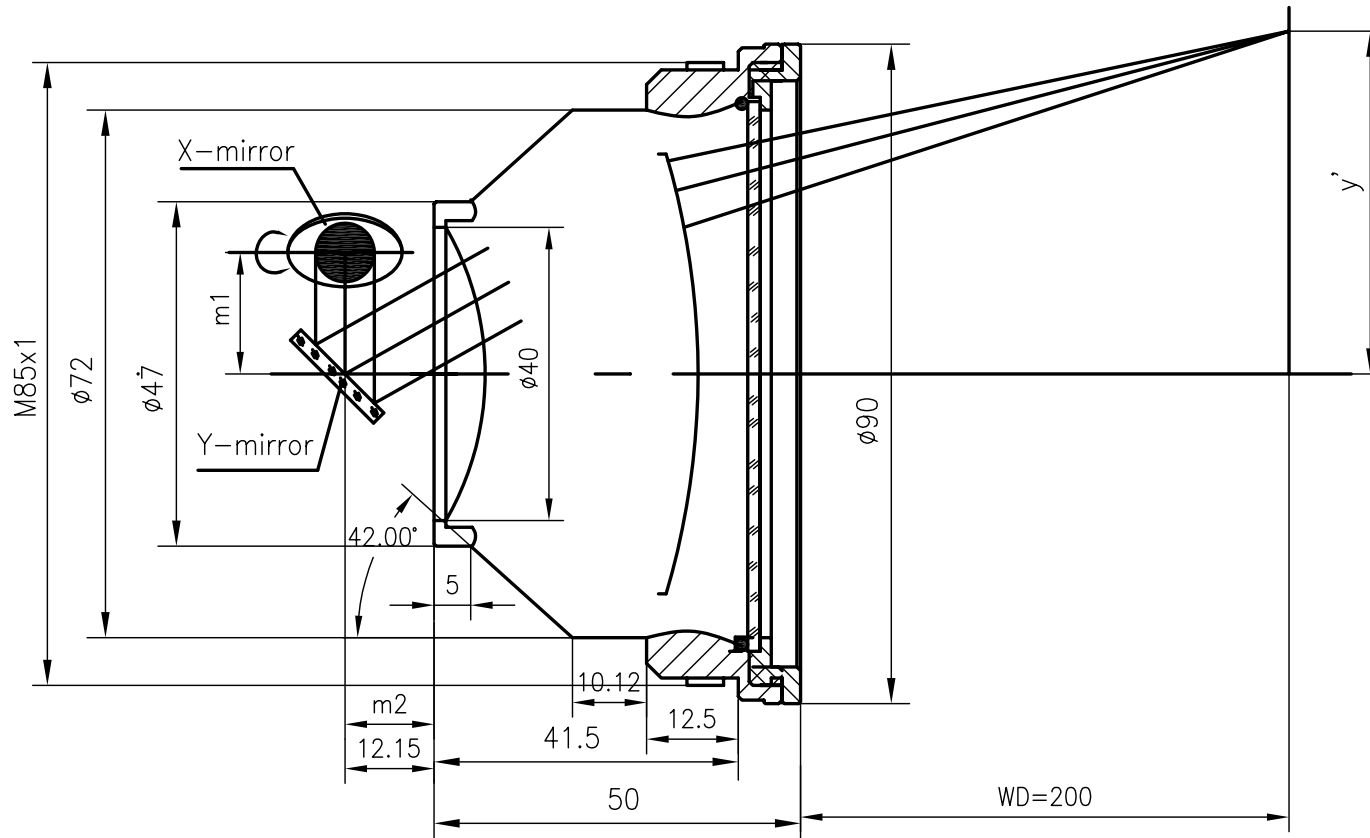


F-Theta f=330mm

Drawing No. SH-355-220-330-8



Specification

EFL	330mm
WD	355mm
Wavelength	$\lambda = 355\text{nm}$
scan angle	$\pm 25^\circ$
max scan field	220mm x 220mm
Entrance beam diameter \varnothing	8mm
Center point diameter ($1/e^2$)	30 μm
Edge point diameter ($1/e^2$)	32 μm
mirror distance m1	16-20
mirror distance m2	10-12
Transmission >	97%
Thread	M85x1
With protective window	yes