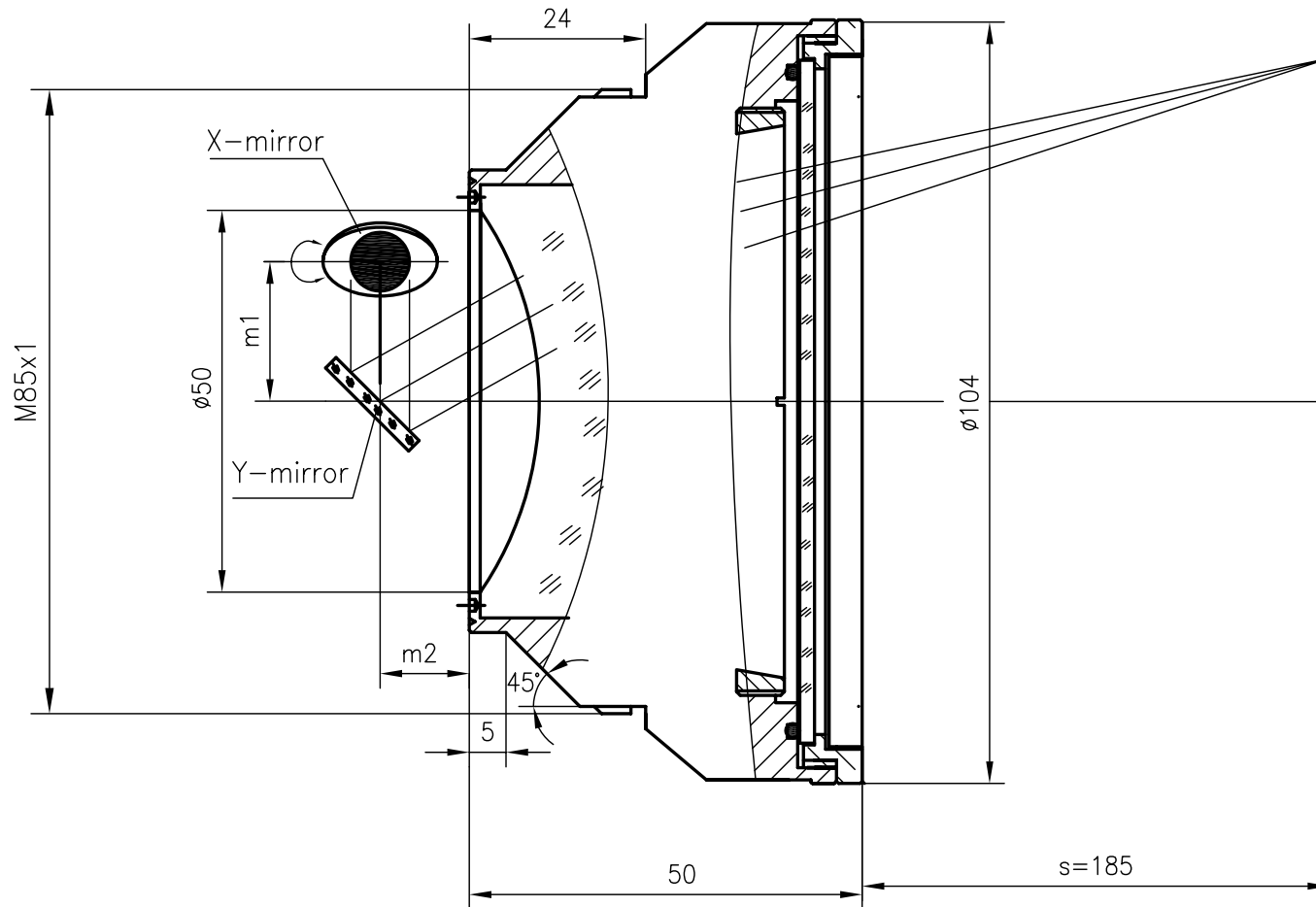


F-Theta f=160mm

Drawing No. SH-1064-110-160-20



Specification

EFL	160mm
S	185mm
Wavelength	$\lambda = 1064\text{nm}$
scan angle	$\pm 28^\circ$
max scan field	110mm x 110mm
Entrance beam diameter \varnothing	20mm
Center point diameter ($1/e^2$)	17 μm
Edge point diameter ($1/e^2$)	19 μm
mirror distance m1	18
mirror distance m2	24
Transmission >	97%
Thread	M85x1
With protective window	yes